

PADS 4

PADS Viewer





Welcome to PADS Viewer

Thank you for choosing PADS, one of the most advanced and complete digital signage software packages that are available today.

This PADS Viewer manual describes the possibilities of PADS Viewer, the application for playback of PADS presentations.

Starting PADS Viewer

PADS Viewer is the application for displaying PADS presentations. Normally, you will have one PADS Viewer per Viewer PC, which controls the display that is connected to this PC. However it is also possible to run multiple PADS Viewers on one single PC, driving one or more displays.

To start the PADS Viewer application

1. Click the **Start** button on the Windows taskbar.
2. Select **Programs** and then **PADS4**.
3. Select **Viewer**.

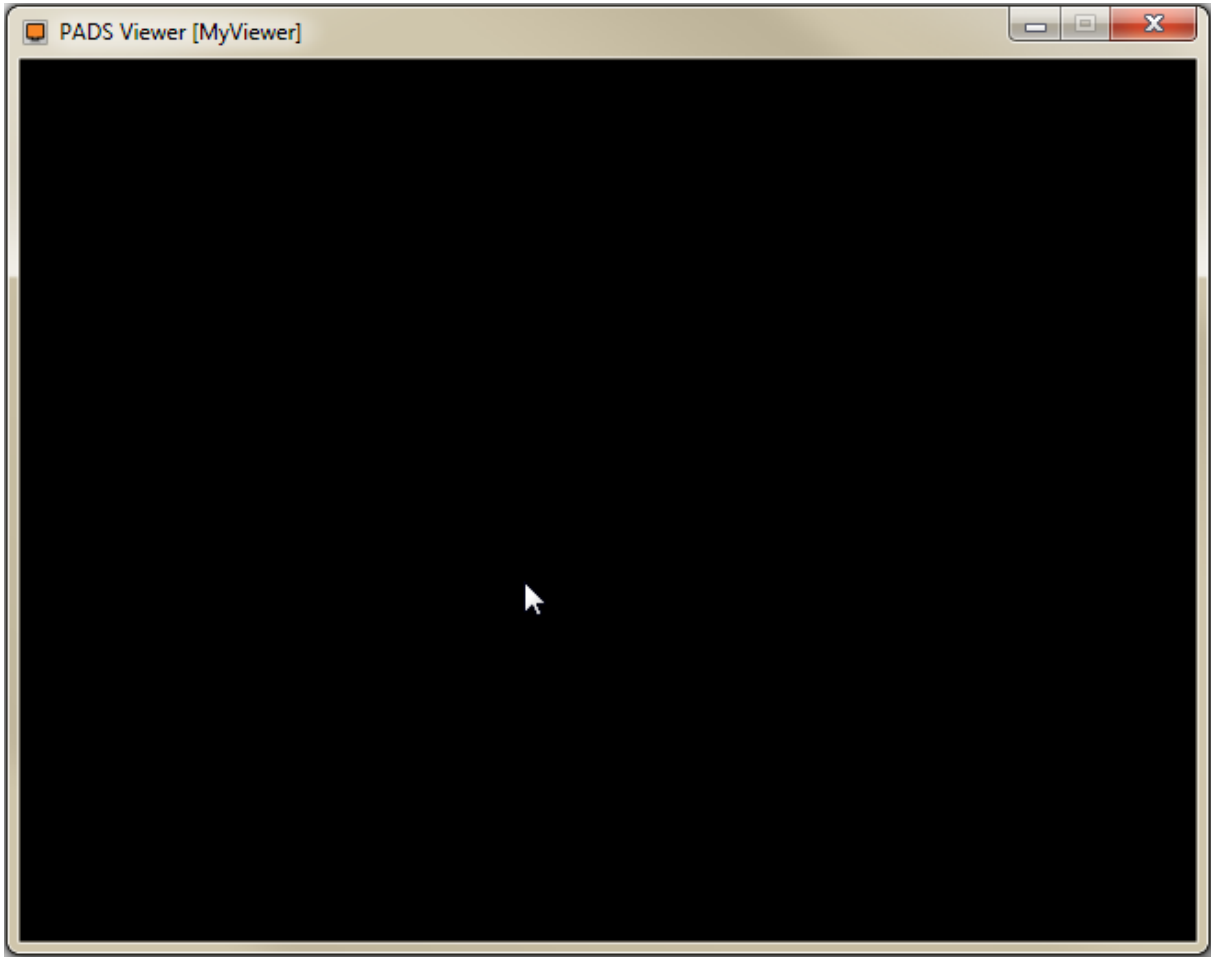
or

1. Double click the **PADS4 Viewer** icon on the Windows desktop.

or

1. In Windows Explorer, go to the folder containing the PADS Viewer program files.
2. Double click the **PADSViewer.exe** item.

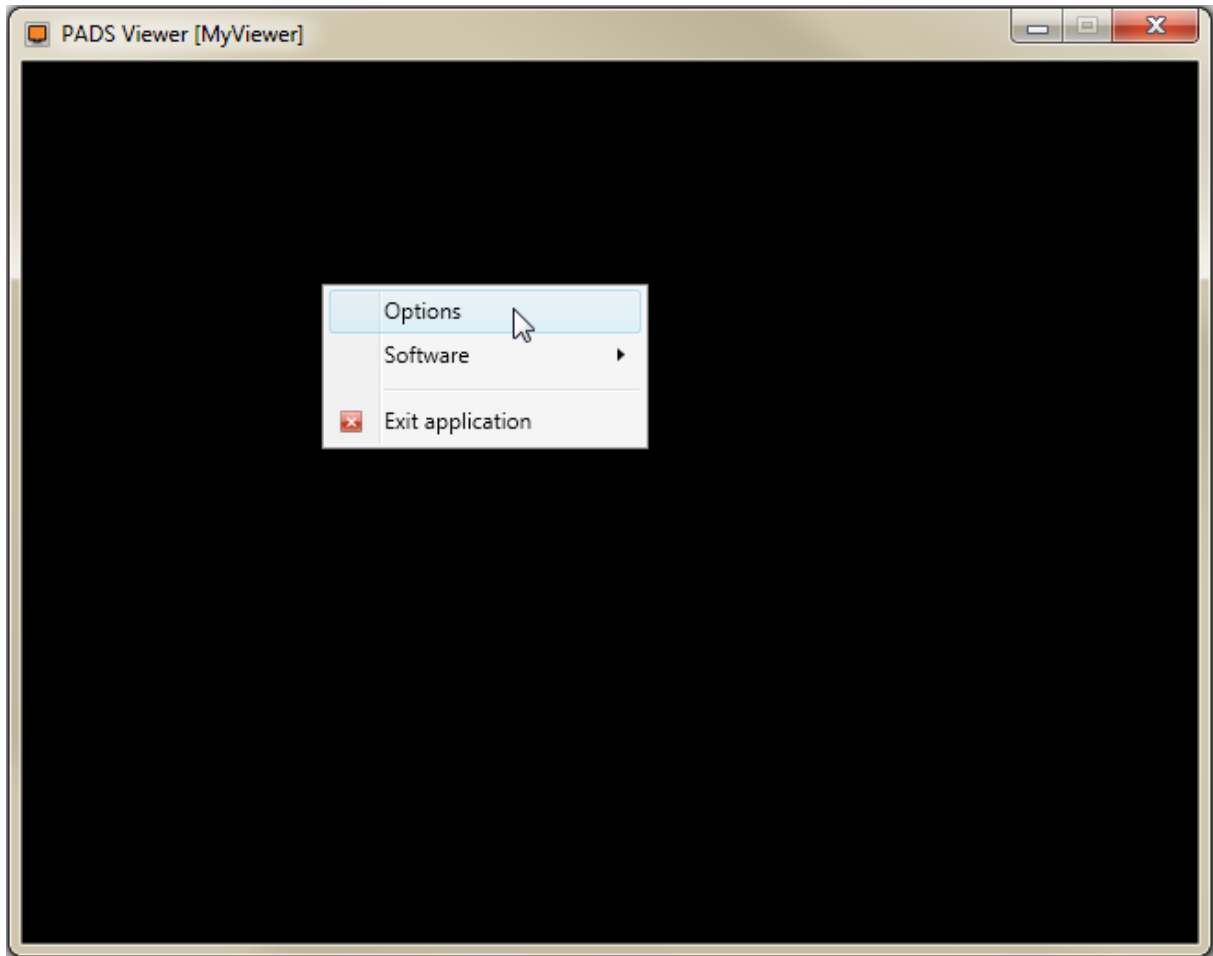
The main window of the PADS Viewer will appear.



Settings

The PADS Viewer application has a number of configuration settings that together determine the overall working of the application.

You can access the settings of the Viewer by right-clicking on the main window and choosing the **Options** item in the context menu.



Further details will be described in the rest of this section.

In this section

Identification

Describes the steps to create a unique Viewer in the PADS system.

Connection

Describes the steps to connect the Viewer to a specific PADS Server.



[Synchronization](#)

These settings determine the process of synchronizing content files (videos, pictures etc.) between the PADS Server PC and the PADS Viewer PC.

[Screen Settings](#)

Determines the window appearance of the Viewer and the way presentations are shown.

[Style](#)

These settings determine the style of the PADS Viewer application.

[Viewer Restart](#)

These settings enable you to schedule a periodic reboot of the PADS Viewer PC.

[Log Information](#)

Lists the information, warning and error messages for the Viewer.

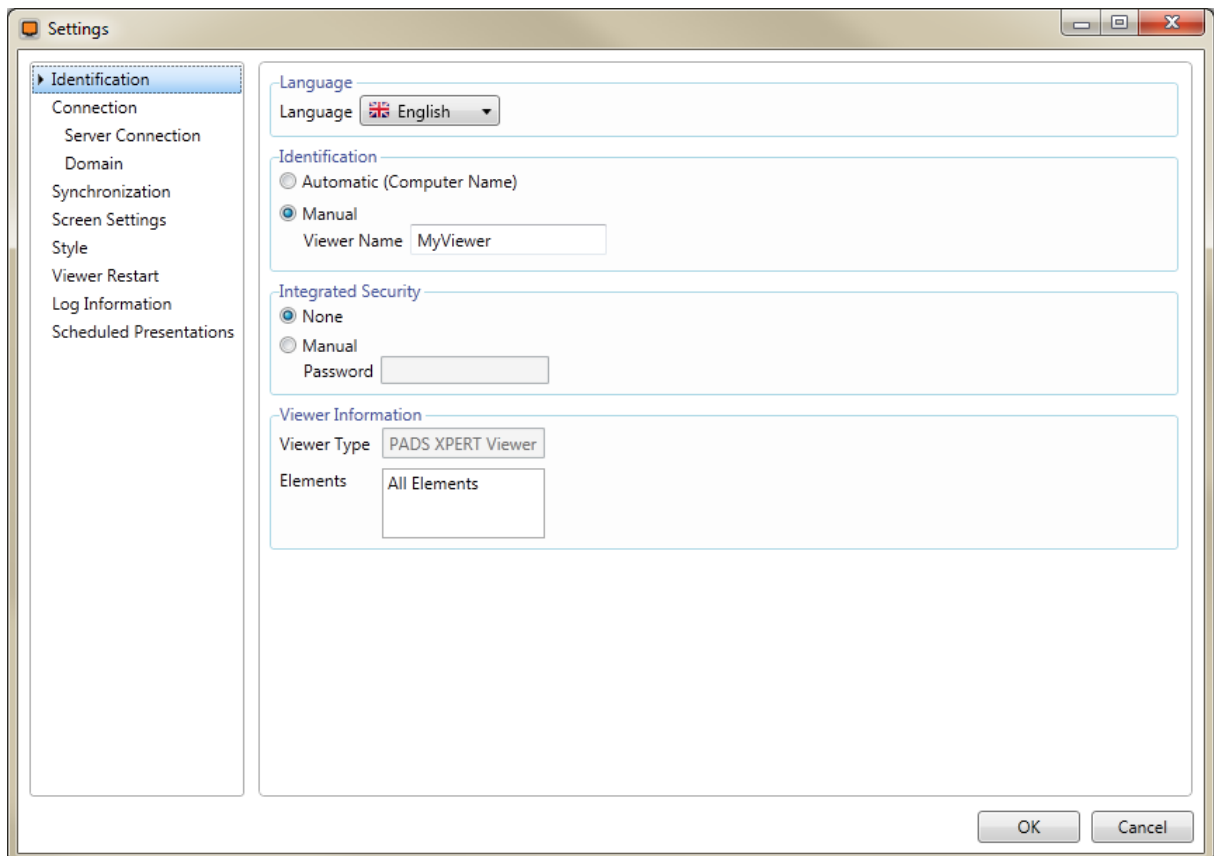
[Scheduled Presentations](#)

Provides an overview of the presentations scheduled for the Viewer.

Identification

These settings determine the unique identification of the Viewer within the PADS system. Each Viewer needs a unique address in order to schedule presentations for it.

To specify identification settings



In the **Language** section you can specify the language that is used for the PADS Viewer.

In the **Identification** section you specify the logical name that uniquely identifies the Viewer within your PADS system. By selecting the option **Automatic (Computer Name)** the Viewer take the PC's name as its name. By selecting **Manual** you can enter a **Viewer Name** .

If you have specified in the PADS System Management application that this Viewer is password protected (see the PADS System Management manual), you need to enter the **Password** at the **Manual** option in the **Integrated Security** section. Else, no password is needed and you can leave the default option **None** untouched.



In the **Viewer Information** section you can view the Viewer's license information, like **Viewer type** and available **Elements**.

Connection

These settings determine the communication between PADS Viewer and PADS Server for retrieval of presentations and schedules.

In this section

[Server Connection](#)

Describes the steps to connect the Viewer to a PADS Server.

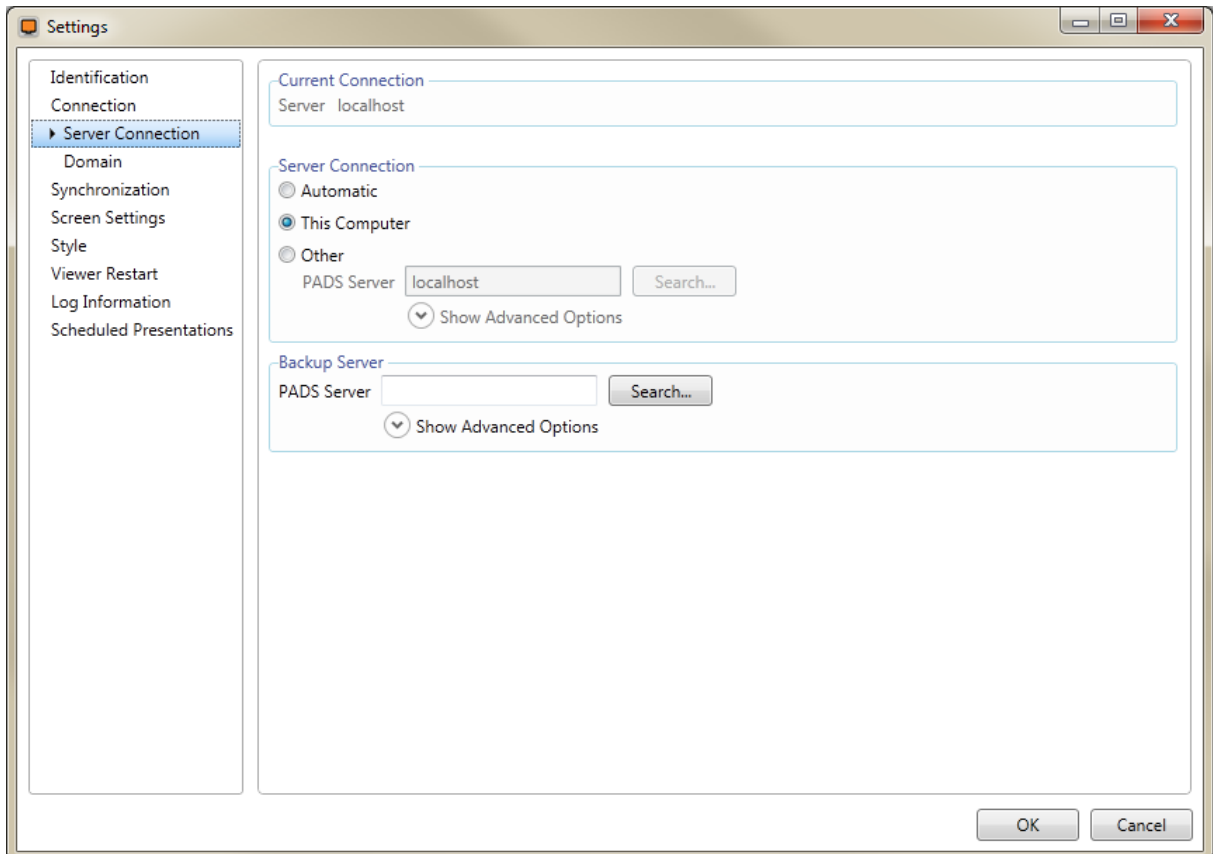
[Domain](#)

Describes the steps to connect the Viewer to a specific PADS domain on the PADS Server, if applicable.

Server Connection

These settings determine the communication between PADS Viewer and PADS Server for retrieval of presentations and schedules.

To specify Server Connection settings



The **Current Connection** section displays information about the connection that is in effect.

The **Server Connection** section provides you with options to choose the Server PC you want to connect to:

1. **Automatic**

This option lets the Viewer PC search automatically for the nearest Server PC. The Viewer PC will connect to the first Server PC found.

2. **This Computer**

The PADS Server resides at the local PC.

3. **Other**

This option will let you enter a net work address (computer name or TCP/IP address) or search for available PADS Servers in the vicinity and list them for you to choose from. Additionally, you can specify another port number for the connection with **Show Advanced Options**.

The **Backup Server** section enables you to specify an additional PADS Server to function as a backup. This is done in the same way as at the **Other** option in the **Server Connection** section.

Domain

These settings determine the communication between PADS Viewer and a specific domain of a PADS Server for retrieval of presentations and schedules.

Domains allow you to combine multiple PADS Servers on one physical Server PC.

To specify Domain settings

The **Domain** section provides you with options to choose the Domain you want to connect to:

1. **Automatic**

This option lets the Viewer PC search automatically for a domain on the specified Server PC. The Viewer. If the PADS Server PC contains multiple domains then the domain that has been marked as the default domain will be used.

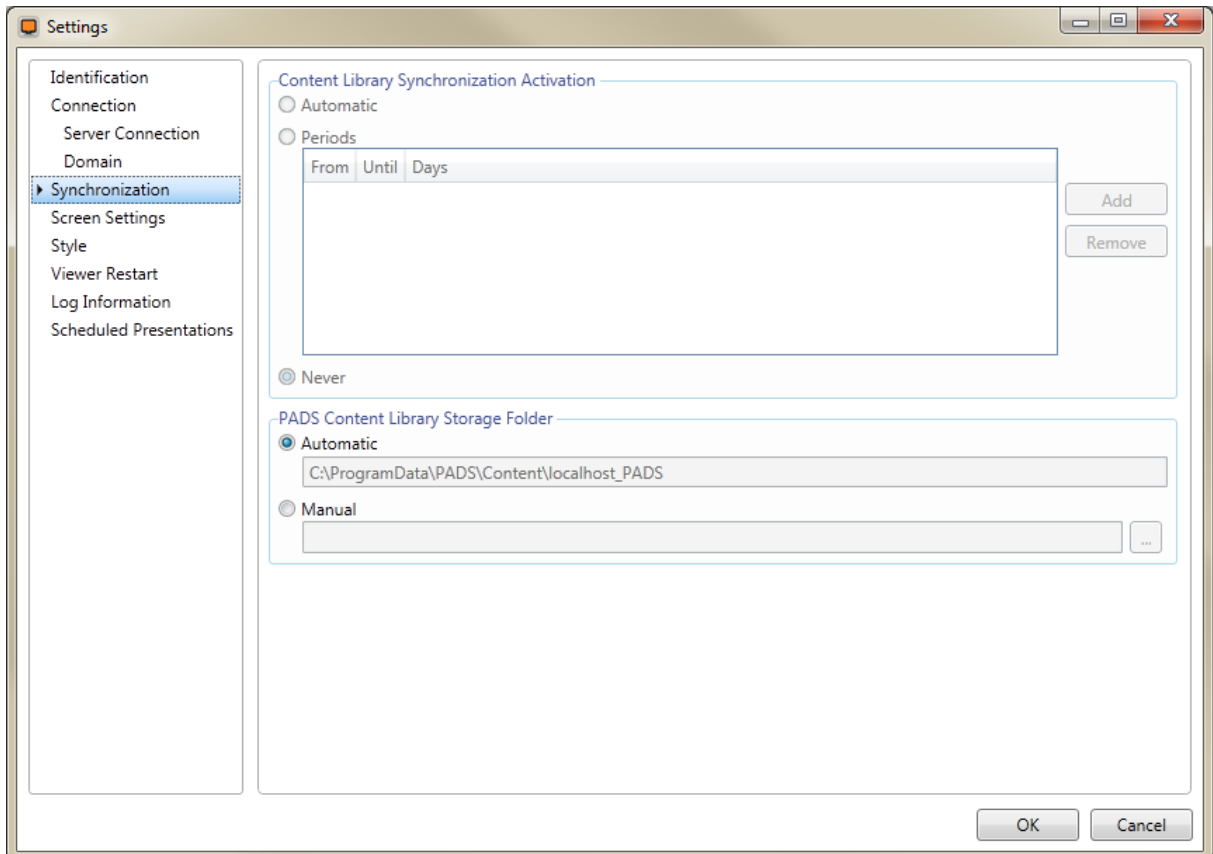
2. **Manual**

This option lets you manually enter the domain name of the **Domain** on your PADS Server PC that you want to connect to.

Synchronization

These settings determine the process of automatic synchronization of content files (videos, pictures etc.) between the PADS Server PC and the PADS Viewer PC.

To set Synchronization setting



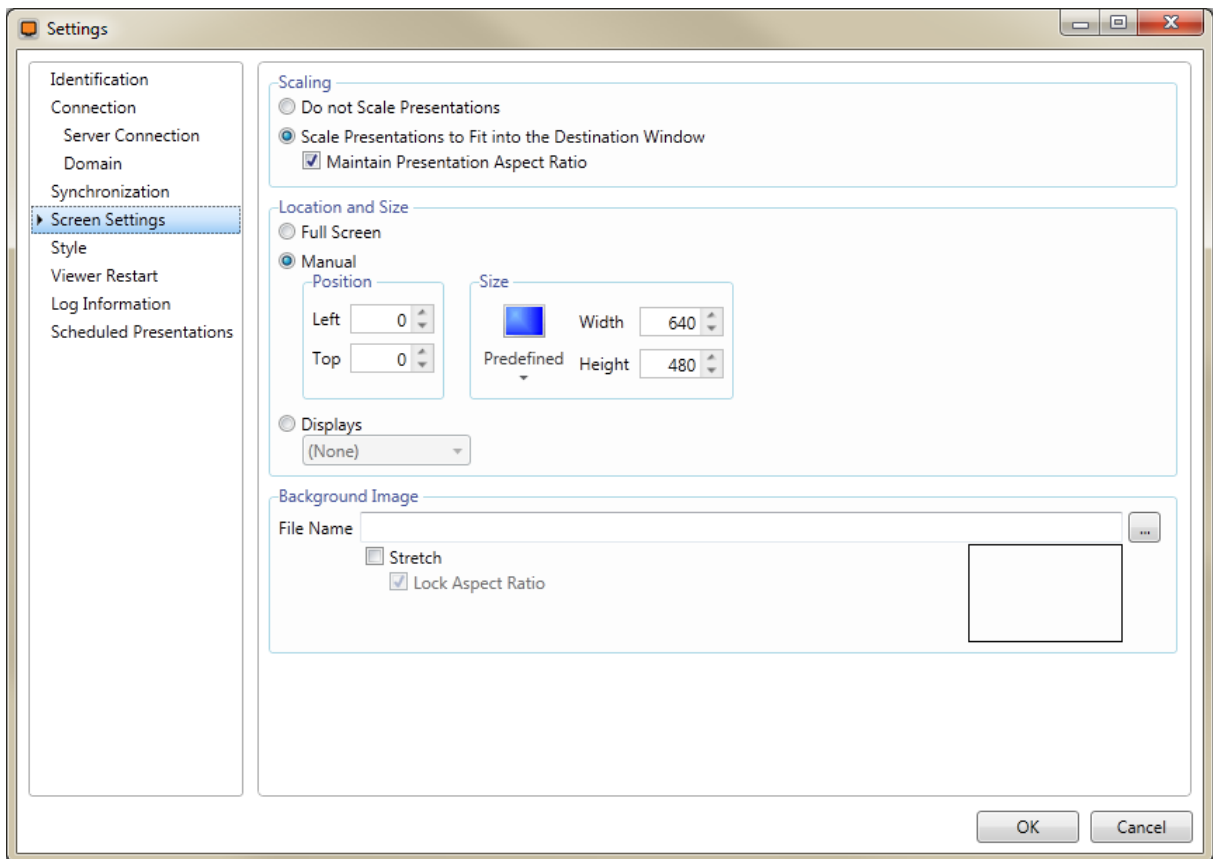
In the **Content Library Synchronization Activation** section you determine at what interval the Content Libraries, local (Viewer) and remote (PADS Server). This can be **Automatic**, checking for triggers to synchronize whenever a change occurs, remote or local. You can have the Viewer check a given **Periods** by creating a list of **From** and **Until** data. Alternatively, you can disable synchronization completely by choosing **Never**.

For synchronization the **PADS Content Library Storage Folder** needs to be specified. You can choose the default by opting for **Automatic** or you can select one yourself at the **Manual** option.

Screen Settings

These settings determine the visual appearance of the content in the PADS Viewer application.

To specify Screen settings



In the **Scaling** section you can determine whether you want to stretch the content of any presentation, with possibly another resolution than the display's, to fit the Window. If you choose to do so with the option **Scale Presentations to Fit into the Destination Window** then you can further determine whether the scaling needs to take aspect ratio into account, so that the presentation and its elements are scaled properly. This can be done by checking or un-checking the **Maintain Presentation Aspect Ratio** checkbox.

In the **Location and Size** section you can specify the dimensions and position of the Viewer application. You can decide to have the Viewer application display in **Full Screen**. Alternatively, you can specify the **Size** and **Position** yourself when you choose the option **Manual**. The **Position** determines the horizontal and vertical offset from the screen's left top. In the **Size** section you can choose from a



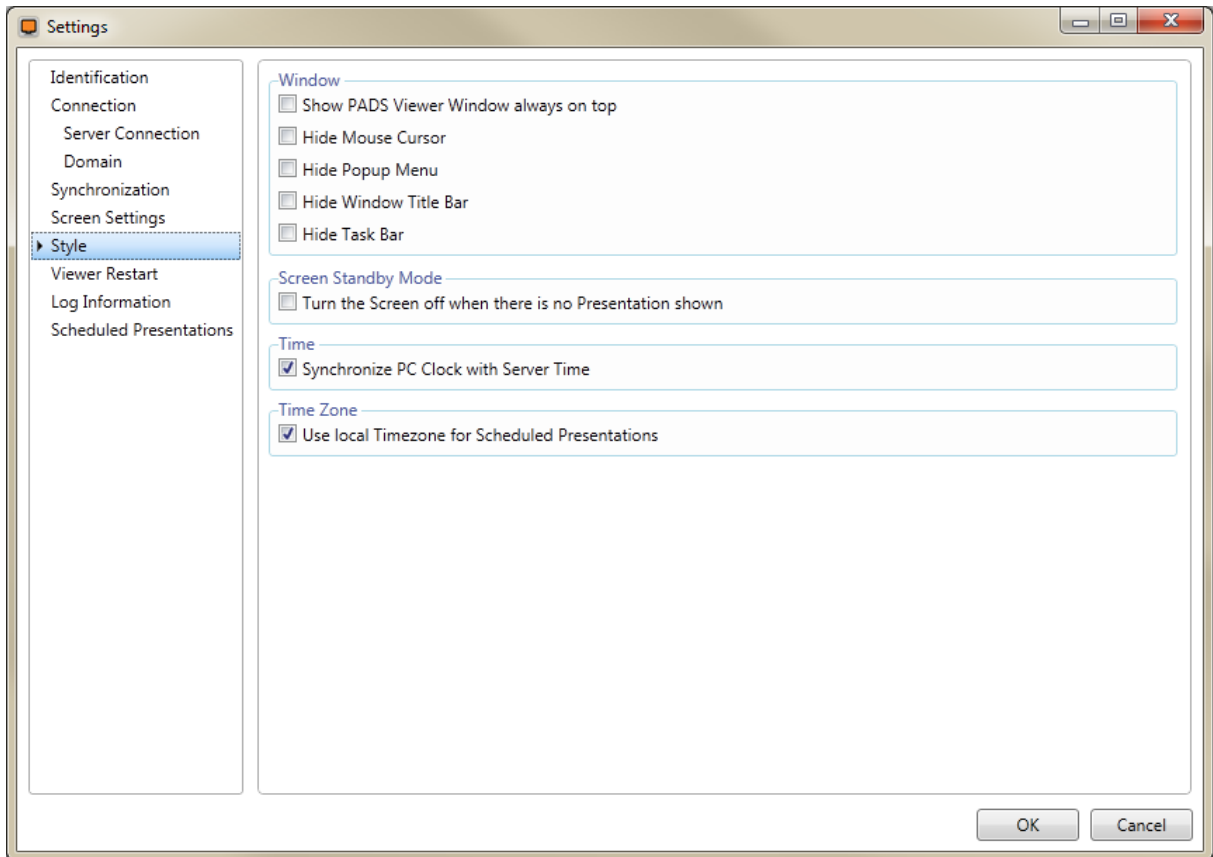
Predefined resolution or enter exact **Width** and **Height**. All measurements are in pixels. Apart from that you can specify whether the content needs to be displayed on one of the other **Displays** than the primary one, if applicable.

Finally, you can opt for a **Background Image** for the Viewer in its corresponding section. A **File Name** is needed to link the image to the background of the Viewer. The **Stretch** option lets you stretch the image to fill out the available space in the display's resolution, if so desired. The underlying option **Lock Aspect Ratio** will maintain the original aspect ratio in stretching the image to fill out the space.

Style

These settings determine the style of the PADS Viewer application.

To specify the Style settings



In the **Window** section you can switch on or off some options concerning the display of the Viewer screen:

1. **Show PADS Viewer Window always on top**

If this setting is switched on then the window of the PADS Viewer application will always stay on top. This means that any other window will be pushed behind the PADS Viewer window.

2. **Hide Mouse Cursor**

With this setting you can determine if you like the mousepointer to be visible or invisible when the PADS Viewer application runs.

3. **Hide Popup Menu**

With this setting you can determine if the context menu (popup menu) of the PADS Viewer window will be accessible.

4. **Hide Window Title Bar**

If this setting is switched off then the window of the PADS Viewer application will contain a title bar. In the title bar the name of the Viewer will be displayed. Only if the title bar is made invisible you will be able to create a real full screen Viewer window.

5. **Hide Task Bar**

This setting determines if the Windows taskbar will be visible when the PADS Viewer application runs. Only if the Windows taskbar is made invisible you will be able to create a real full screen Viewer window.

In the **Screen Standby Mode** section you can switch the option **Turn the Screen off when there is no Presentation shown** on or off to have the screen go to black when no presentation has been scheduled for display. This setting enables you to start or shutdown a monitor display based on the availability of presentations for the PADS Viewer. The number of seconds indicates the idle period after which the display must be shut down.

In the **Time** section you can switch the option **Synchronize PC Clock with Server Time** on or off to have the local system clock of the Viewer PC synchronized with the system clock of the PADS Server PC. In most situations it will be best switch on this synchronise option, to make sure that the date and time of both the Server PC and the PADS Viewer PC will run exactly in sync. If this is not the case it might happen that the information in the PADS Scheduler application will not correspond with the presentation that is displayed by the PADS Viewer application.

If the setting **Use local Timezone for Scheduled Presentations** in the **Time Zone** section is switched on then the PADS Viewer application will use it's local Microsoft Windows timezone settings to determine when a scheduled PADS presentation must be played.



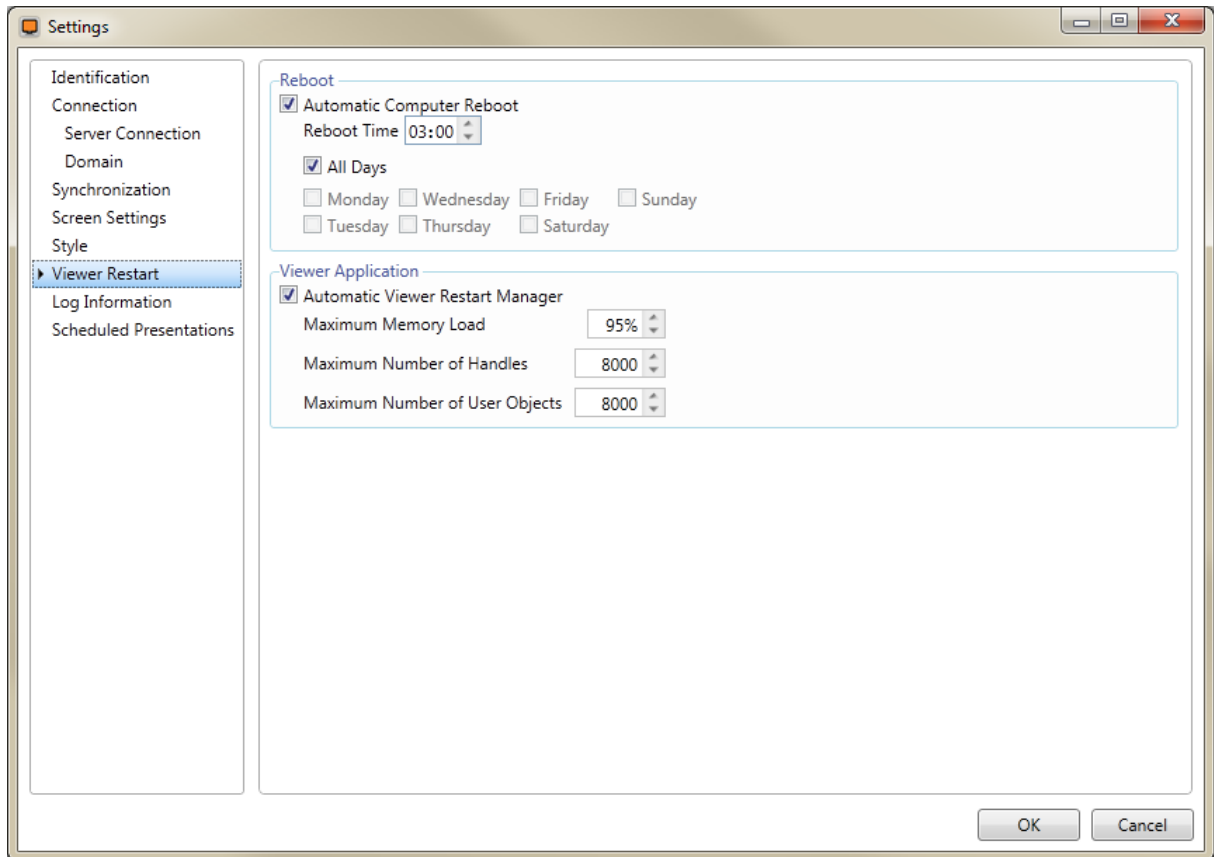
EXAMPLE

If a presentation has been scheduled to run from 9:00 until 11:00 for a PADS Viewer in Amsterdam as well as a PADS Viewer in New York and the TimeZone setting for these Viewers has been switched on, then the presentation will play from 9:00 until 11:00 local time.

Viewer Restart

These settings enable you to schedule a periodic restart of the PADS Viewer PC.

To specify Viewer restart settings



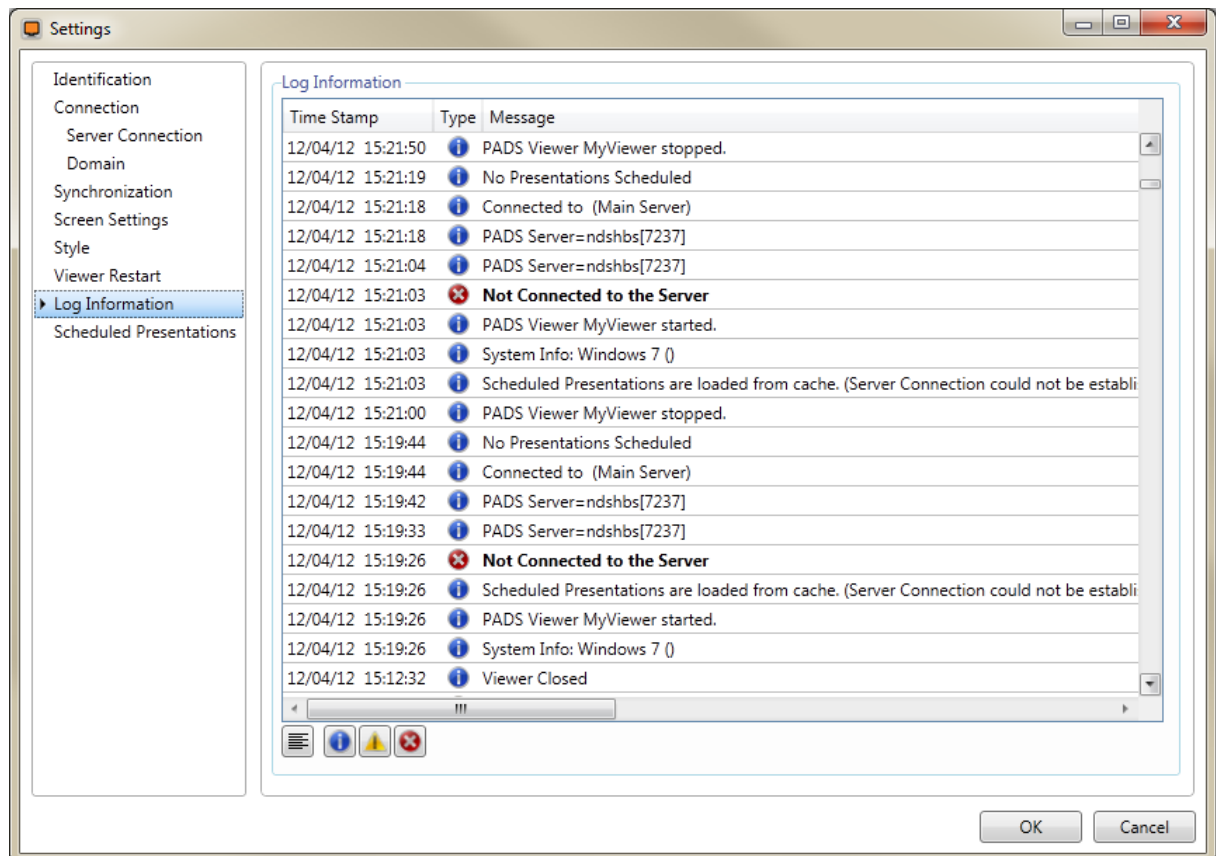
In the **Reboot** section you can specify if you want to have the Viewer PC restarted, and if you do, you can specify the **Reboot Time** as well as the pattern of days at which the Viewer PC should be restarted.

In the **Viewer Application** section you set the triggers for the Viewer application to close down and restart itself (not the PC!). You specify the criteria like **Maximum Memory Load**, **Maximum Number of Handles** and **Maximum Number of User Objects**.

Log Information

The Log Information contains valuable information about the Viewer application process.

To view the Log Information



The **Log Information** section is a placeholder for the presentations that are to be running at the current time.

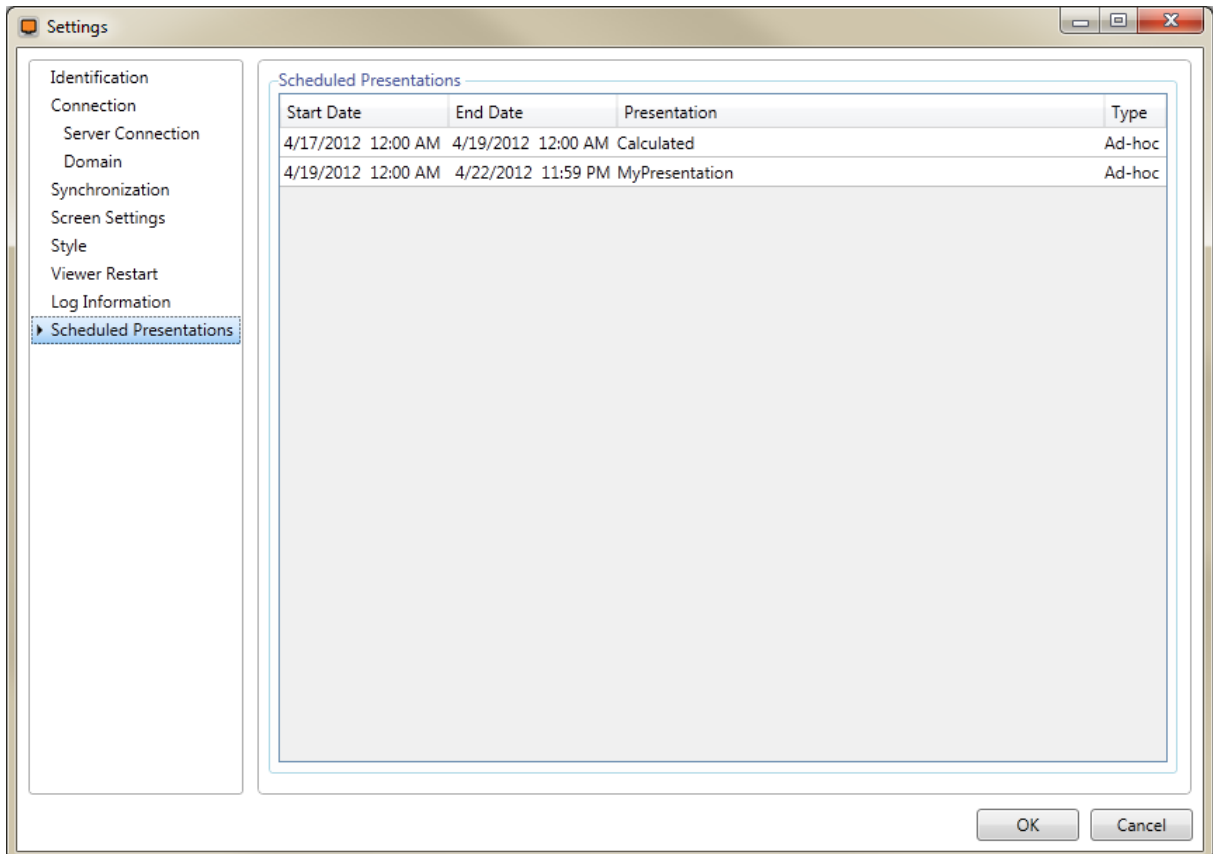
If any information is shown then the **Time Stamp**, the **Type**, and the **Message** are listed.

If you want to view only the Information items, Warnings, Errors or any combination of those, then use the buttons below the listing to filter the Log Information.

Scheduled Presentations

PADS Viewer now offers the possibility to get an overview of the presentations that are scheduled for this Viewer at the time of checking.

To get an overview of the current scheduled presentations



The **Scheduled Presentations** section is a placeholder for the presentations that are to be running at the current time.

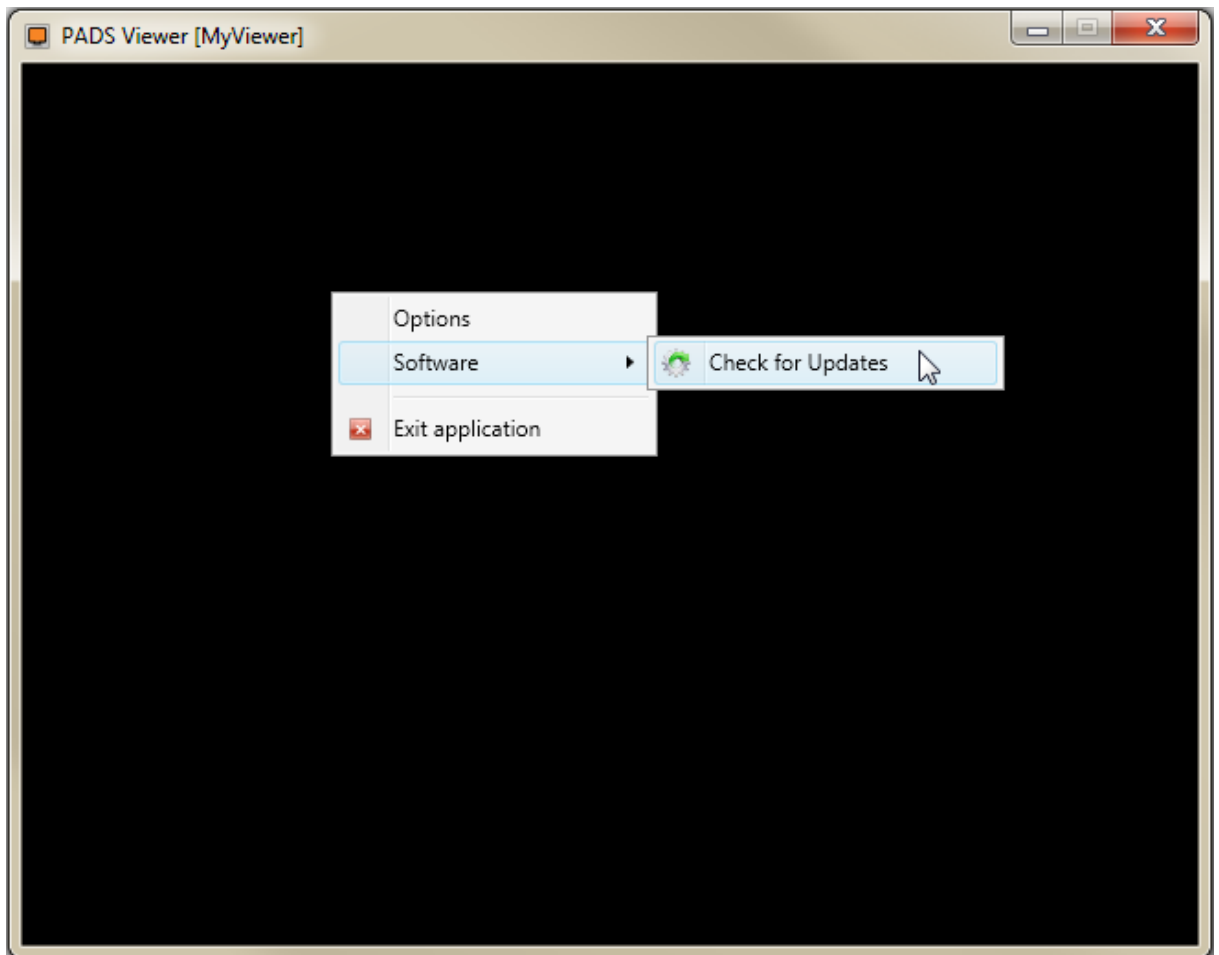
If any presentations are to be shown at the time of checking then the **Start Date**, the **End Date**, the **Presentation** and the **Type** are listed.

Checking for Updates

As with the other applications within the PADS4 software package the Viewer has the ability to check for a newer version.

To check for updates

1. Right-click on the main screen of the PADS Viewer, select the **Software** item from the context menu, followed by the **Check for Updates** menu item.



2. The PADS Software Update Wizard is started. The steps that follow are described in the PADS Installation Manual, in the section Maintaining the installation. Please consult that manual for further instructions.

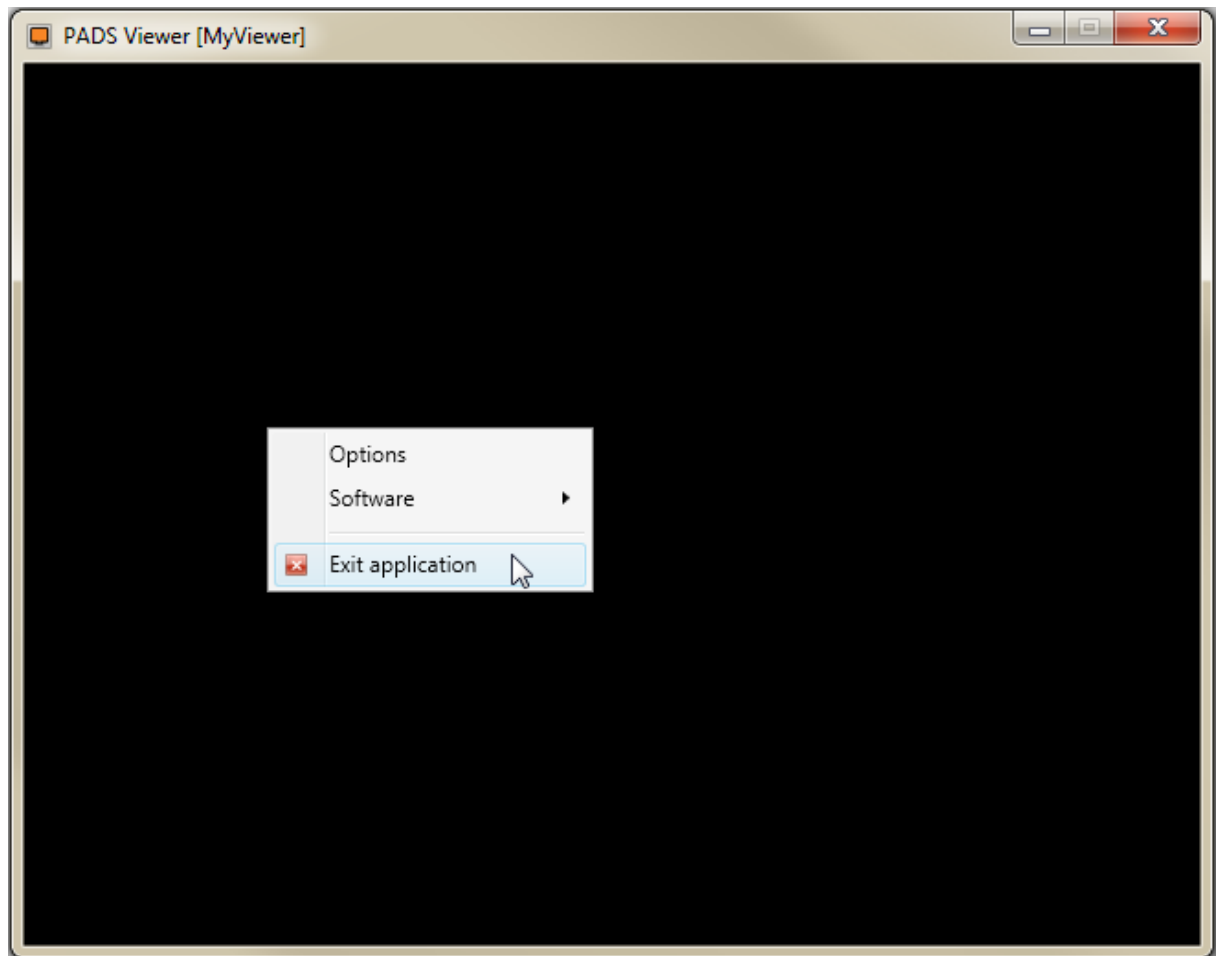


Closing PADS Viewer

When you are finished with displaying presentations you can close the PADS Viewer application.

To close the PADS Viewer

1. Right-click on the main screen of the PADS Viewer and click the **Exit application** item from the context menu.



Alternatively, you can use the key combination [Alt] + F4 to leave the application. If you have opened additional windows then you must use this key combination several times to quit.

NOTE

When closing the application you will automatically be logged off in all connections that you have active, after which they will be closed.

